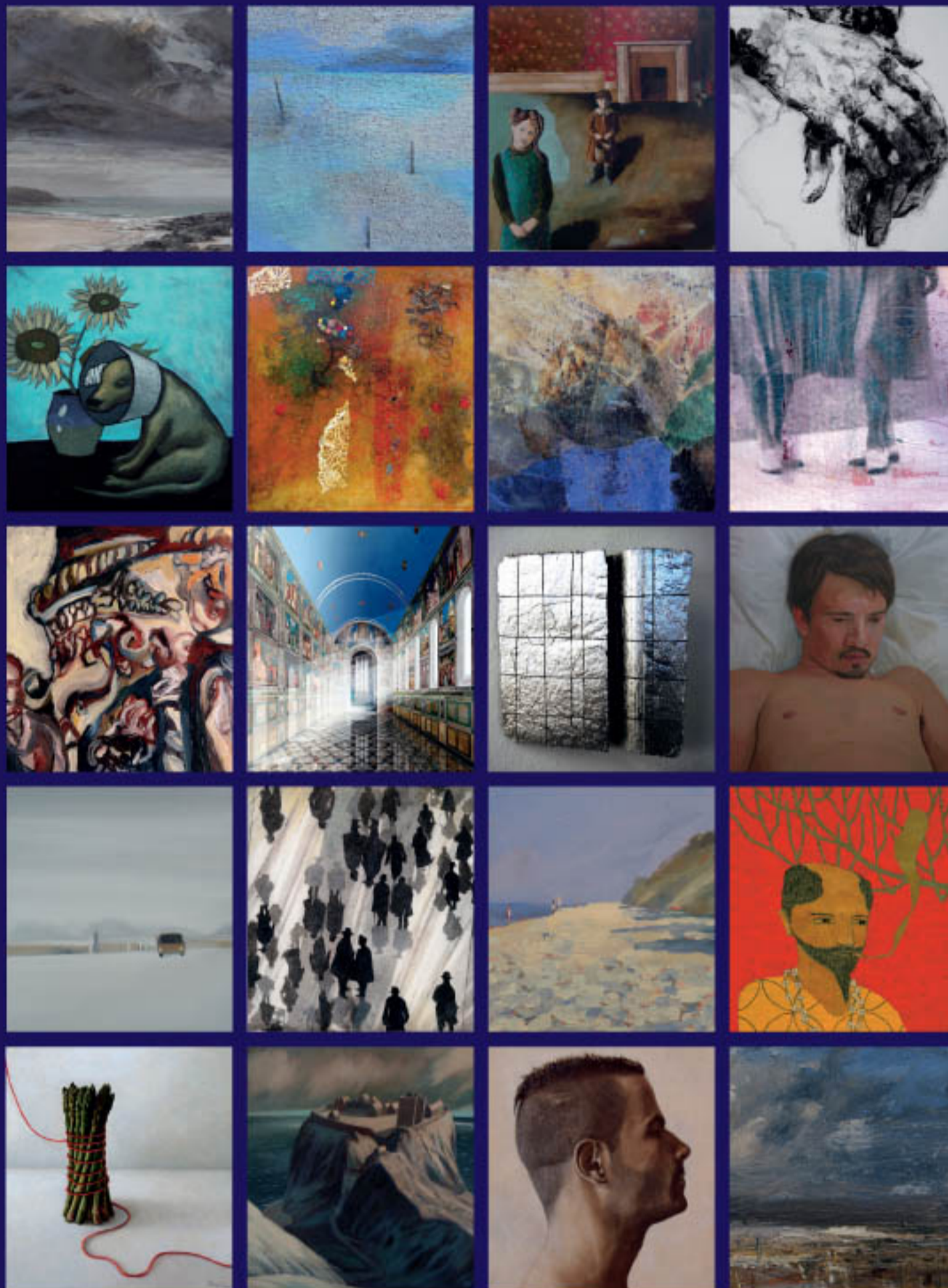


CALL FOR ENTRIES 2010

ING DISCERNING eye EXHIBITION



The ING Discerning Eye Exhibition is a show of small works independently selected by six prominent figures from different areas of the art world: two artists, two collectors and two critics. Work is selected from open submission and also from artists invited by the individual selectors. Each section is hung separately to emphasise its own distinctive identity. The impression emerges of six small exhibitions within the whole. It provides an unusual opportunity for works by lesser-known artists to be hung alongside contributions from internationally recognised names. The selectors are solely responsible for their own selection. The only restrictions are limitation of size and to select at least 25% of their section from the open submission. The deadline for entries is in London on 3 and 4 September 2010.

Entry forms and information can be downloaded from www.parkerharris.co.uk Alternatively please send an SAE to The ING Discerning Eye Exhibition, c/o Parker Harris, PO Box 279, Esher, Surrey, KT10 8YZ.

For all enquires contact the Competition Administrators:
t: 01372 462190 or
e: de@parkerharris.co.uk

PARKER HARRIS

2010 SELECTORS

ARTISTS

Robbie Wraith

Ishbel Myerscough

COLLECTORS

Judith Collins

Writer and former Senior Curator, Tate Britain

Nina Campbell

Interior Designer

CRITICS

Tim Barber

Arts editor, City AM

Mark Rappolt

Editor, Art Review

PRIZES

ING Purchase Prize

£5000

Discerning Eye Founder's Purchase Prize
In honour of Michael Reynolds

£2500

Discerning Eye Chairman's Purchase Prize

£1000

Meynell Fenton Prize

£1000

The Benton Purchase Prize

£1000

The Huxley Purchase Prize

£500

The Humphreys Purchase Prize

£750

The V&A Acquisition Prize

The winner's work will be added to one of the national collections held by the Victoria and Albert Museum.

Regional Entry Prizes

There will be 8 prizes of £250 each awarded to an outstanding entry in the national regions.

SPONSOR

ING Commercial Banking in the UK is delighted to sponsor the ING Discerning Eye Exhibition again in 2010. This continues a relationship which goes back to 1999. ING is proud to support one of the most important independent exhibitions in the UK and appreciates The Discerning Eye's commitment to individuality, excellence and increasing opportunities for artists across the UK. ING Commercial Banking is responsible for providing financial products and services to corporate and institutional clients across Europe, the Americas and Asia. Headquartered in Amsterdam, ING Group is one of the world's largest financial institutions, providing a wide range of financial services.

FRIENDS AND MEMBERS OF THE DISCERNING EYE

The Discerning Eye has a membership system for artists, and a Friends scheme for all other interested parties. Membership costs £40 per year, which includes free submission for up to six works to the main exhibition in November. It does not guarantee that your work will be chosen and hung in the exhibition, but for non-members, the price of submitting six works is currently £54. There are also additional benefits including two newsletters a year and private view tickets.

For further information please check The Discerning Eye website www.discerningeye.org. Membership application forms are included in all Entry Packs and can also be downloaded from www.parkerharris.co.uk and www.discerningeye.org (see <http://discerningeye.org/about/join/join.php>).

2009 EXHIBITION

Of the 522 works on show in the 2009 Discerning Eye Exhibition 226 (43%) were from the open submission artists. A total of 162 works sold, of which 92 (56%) were by open submission artists.

2010 EXHIBITION

The Mall Galleries, The Mall, London SW1

11 November – 21 November 2010

Admission Free

As many as 600 works may be on show in the exhibition. All selected artists will be invited to a Private View on 11 November 2010.

HOW TO ENTER

Entry Schedules and labels are available by sending an SAE to The ING Discerning Eye Exhibition, C/o Parker Harris, PO Box 279, Esher, Surrey KT10 8YZ, downloading from the Parker Harris website: www.parkerharris.co.uk or downloading from the Discerning Eye website: www.discerningeye.org

RULES OF THE 2010 EXHIBITION

Membership of the Discerning Eye Members' Scheme, and submission of works to the ING Discerning Eye exhibition, is only open to artists born or resident in the UK.

All works must be for sale. All works must be within the maximum size limit (20 inches). Works must be handmade; photographs are admissible. Each artist may submit up to six works.

Frames

All works on paper must be securely framed. Frames should be stout enough to accept a small screw or nail in the back for hanging purposes. Fixings are not required, if selected for exhibition mirror plates will be supplied and used by the organisers. There should be no projections of any kind whatsoever from the back of the frames to avoid damage to other works. Metal frames, glazed works with unprotected glass edges and non-reflective glass are all inadmissible. Frames and mounts of unusual colour, size or design may prejudice the selectors' judgement.

Maximum Size of Work

2D – 20" x 20" including frame

3D – 20" x 20" x 20" including plinth/stand

These sizes refer to the exterior frame size or in the case of sculpture the longest lateral or overall vertical measurement. Work exceeding these dimensions will be rejected.

Entry Schedule

The Discerning Eye Schedule must accompany all works. It shall not be accepted unless it is signed by the artist or their representative. Please complete the Schedule in block capitals using a ballpoint pen and ensure that the information comes through on all copies.

Labels

Please complete the gummy labels carefully and attach to the back of the picture or to the base of the sculpture.

Submission Fees

The submission fee is £9 per work to be paid at the time of delivery. Please make cheques payable to 'The Discerning Eye Ltd'.

Insurance

The Discerning Eye makes no provision for individual insurance of works and all artists submitting work for exhibition are strongly advised to make their own arrangements in this regard.

SUBMISSION PROCEDURE

Entry Schedules and labels should be completed and submitted along with entry fees and relevant works of art (unwrapped), to the Mall Galleries or to the regional handing-in centres as detailed below. Works of art can only be accepted on the receiving days stated and should be delivered unwrapped, although corner protection on paintings is permissible. Sculpture, ceramics etc should be sent in sturdy cardboard boxes, packed with lots of packing material. Please do not bind the works with tape or string.

Collection of Unselected Work

Artists will be notified with Part 2 of the Entry Schedule if their work has not been selected. If you do not receive notification by Thursday 9 September 2010 please contact Parker Harris on 01372 462190. A list of accepted names and registration numbers will be viewable around this time at www.parkerharris.co.uk. The selectors' decisions are final and no correspondence will be entered into. All unselected works must be collected from the Federation of British Artists, 17 Carlton House Terrace, London, SW1Y 5BD on Friday 10 and Saturday 11 September 2010, between 10am – 5pm.

All works not collected on these dates will be removed to storage by the Mall Galleries' designated art carrier, Picture Post, who will levy a charge of £15.50 (inc. VAT) for this removal and storage. Enquiries should be made to Picture Post directly on 01302 711011 or picturepost@btinternet.com. The one off charge from Picture Post is for the removal, storage and return of each work they collect from the Mall Galleries following the official hand out days detailed above. Works removed in this way will be available for collection by appointment from the Picture Post van outside the Mall Galleries when they are next scheduled to be in central London.

Sale of Works

ALL WORKS MUST BE FOR SALE. A commission of 40% + VAT shall be charged by The Discerning Eye on the price paid for work or copyright or work commissioned at the exhibition or as a result of introductions arranged by The Discerning Eye. The Discerning Eye is a non-profit making organisation and any monies received go towards the next exhibition. Any sales effected by The Discerning Eye will have priority over a sale effected by the artist. Artists should make allowance for this commission of 40% + VAT in the price of the work described in the Entry Schedule. If registered for VAT it is the artist's responsibility to declare and include this sum at the standard rate at the same price. The price entered on the Schedule will be the catalogue selling price so please enter the figures carefully and accurately.

Online Sales

All works in the ING Discerning Eye Exhibition will be included in The Discerning Eye's online version of the catalogue. Work not sold at the exhibition will remain for sale on the website until 1 January 2011. Artists accepted for exhibition will be asked to provide a digital image of their work and a short biography for inclusion on The Discerning Eye website.

Collection of Unsold Works

Unsold works will be available for collection from the Federation of British Artists, 17 Carlton House Terrace, London, SW1Y 5BD, on Friday 26 November 2010, 10am – 5pm. Works not collected on this date will be subject to the same removal and storage charges by the Mall Galleries as the unselected work.

Photographs

The artist accepts and agrees that all works in the exhibition may be photographed and/or reproduced for: the catalogue, press, publicity, promotion and advertising of The Discerning Eye and/or its activities and/or its exhibitions (including its online version of the catalogue) in all territories in perpetuity.

Copyright

Copyright of all works remains the property of the artist. Any enquiries for copyright will be referred to the artist.

Care of works

i. The responsibility for loss or damage, however caused, is the responsibility of artists, who are therefore advised to arrange adequate insurance cover against these risks.

ii. In the event of any dispute arising as to any discrepancy whether perceived or real between the sale price specified on the Entry Schedule and any final sale price, The Discerning Eye reserves the right to refer the matter to an independent expert arbitrator whose decision shall be in full and final settlement of any and all claims by either party subject to the limitations as to the liability of The Discerning Eye contained in paragraph i. herein.

RECEIVING DATES AND PLACES

Delivery of work through a regional collection point will be £8 (inclusive of VAT) per work (excluding Belfast - please contact carrier for charges). All fees are due at the point of submission. Cheques should be made payable to 'The Discerning Eye Ltd'. At each regional collection venue, the collecting van will be marked 'The ING Discerning Eye Exhibition'.

London	Friday 3 & Saturday 4 September 2010 10am – 5pm, Federation of British Artists (rear of The Mall Galleries), 17 Carlton House Terrace, London, SW1Y 5BD.
Belfast	Friday 20 August 2010 10am – 4pm, Delivery Services, 16 Genva Street, Carrier: Delivery Services 02890 315080. Please contact carrier direct regarding all transport costs, return dates and costs. All transport and entry fees payable on submission.
Birmingham	Thursday 2 September 2010 12noon – 3pm, The Barber Institute of Fine Art, Edgebaston Park Road, Edgebaston B15 2TS. Carrier: Art Moves of Chelsea, 02073 527492 or artmovesofchelsea@aol.com
Bristol	Thursday 2 September 2010 11am – 1pm, RWA Forecourt, Queens Road, Clifton, Bristol. Carrier: AJH Van Lines 07774 132662 or ajhvanlines@virgin.net . Please contact carrier to provide numbers and size of works, return service also available.
Cardiff	Thursday 2 September 2010 3pm – 5pm, Llanover Arts Centre, Romily Road, Canton, Cardiff. Carrier: AJH Van Lines, for contact details see Bristol.
Doncaster	Monday 30 August 2010 3pm – 7pm, Pengarth, Dame Lane, Mission, DN10. Carrier: Picture Post, 01302 711011 or picturepost@btinternet.com Return service and collections en route available, for more information please contact carrier.
Edinburgh	Saturday 28 August 2010 3pm – 4.30pm, Edinburgh College of Art, Lady Lawson Street car park, EH3 9DF. Carrier: Picture Post, for details see Doncaster.
Exeter	Wednesday 1 September 2010 10am – 12pm, Motto Motorway Services, Exeter (Jory park). Carrier: AJH Van Lines, for contact details see Bristol.
Glasgow	Sunday 29 August 2010 9.30am – 11am, Glasgow School of Art, junction of Renfrew Street and Dalhousie Street, G3 6RQ. Carrier: Picture Post, for details see Doncaster.
Kendal	Sunday 29 August 2010 2.45pm – 3.45pm, Junction 36 of the M6. For exact details please contact carrier: Picture Post, for details see Doncaster.
Manchester	Sunday 29 August 2010 Please contact carrier for locations and times for collection en route. Carrier: Picture Post, for details see Doncaster.
Newcastle	Saturday 28 August 2010 10am – 11.30am Newcastle, Rye Hill Campus, Scotswood Road, NE4 5BR. Carrier: Picture Post, for details see Doncaster.
Norwich	Friday 3 September 2010 12pm – 3pm Outside Colman House, University of East Anglia, Earlham Road, NR4 7TJ. Carrier: Art Moves of Chelsea, for contact details see Birmingham.
Penzance	Tuesday 31 August 2010 10am – 12noon, Penzance Harbour car park. Carrier: AJH Van Lines, for contact details see Bristol.
Southampton	Wednesday 1 September 2010 4pm – 5.30pm Southampton Institute, East Terrace, Southampton, SO14 0YN (small top car park.) AJH Van Lines, for contact details see Bristol.

The ING Discerning Eye Exhibition is organised by

PARKER HARRIS

For all enquiries contact Parker Harris on 01372 462190, fax: 01372 460032, email: da@parkerharris.co.uk, website: www.parkerharris.co.uk

The signing of the Entry Schedule shall be taken as the unreserved acceptance of the entire contents of these conditions in the Notice to Artists by signatory.

Registered Charity No 1056091 Company No 03040828 VAT Reg No 557 1501 42. A company limited by guarantee not having share capital.