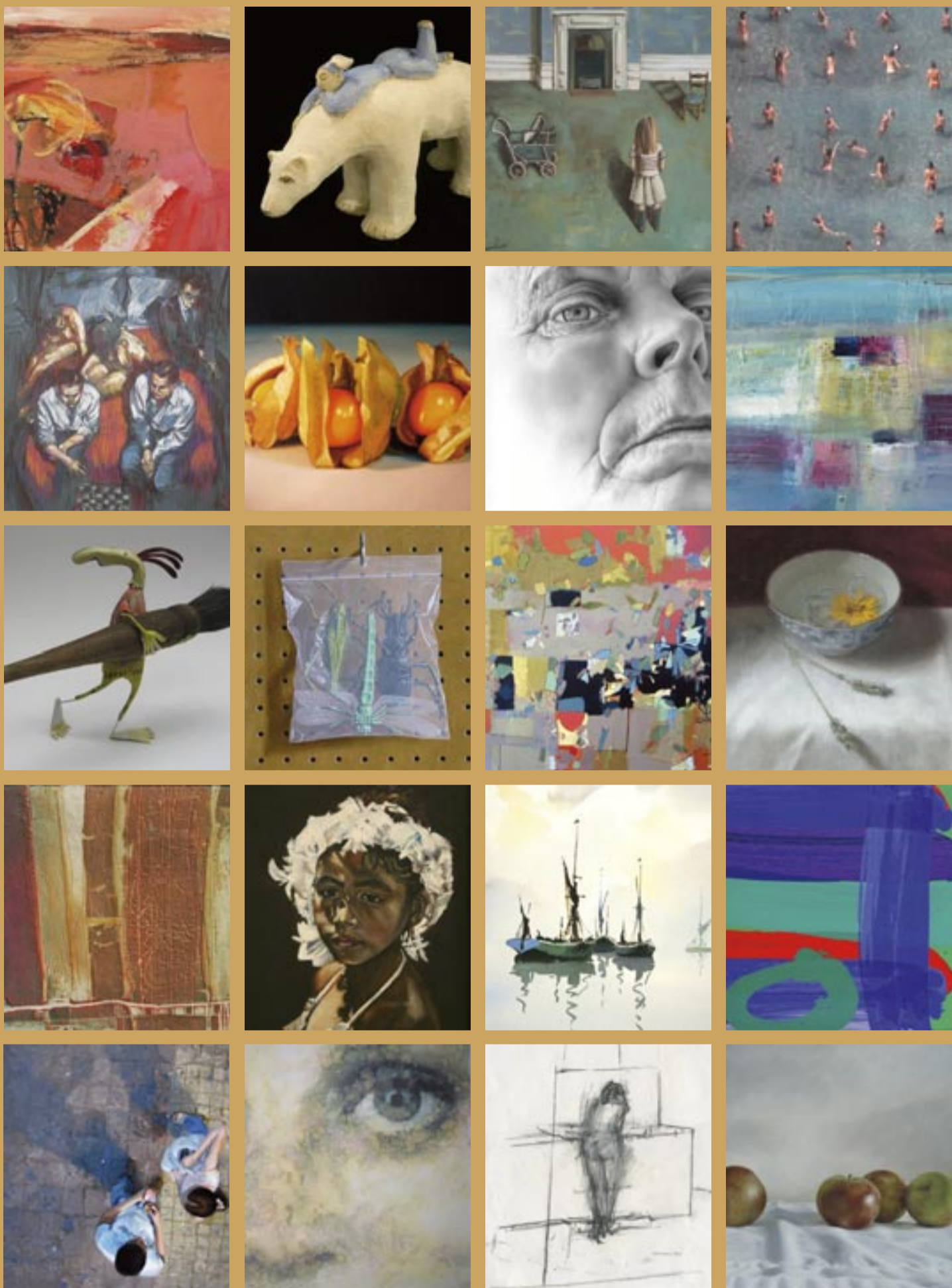


**CALL FOR  
ENTRIES 2009**

**ING**   
**DISCERNING  
eye**  
**EXHIBITION**



The ING Discerning Eye Exhibition is a show of small works independently selected by six prominent figures from different areas of the art world: two artists, two collectors and two critics. Work is selected from open submission and also from artists invited by the individual selectors. Each section is hung separately to emphasise its own distinctive identity. The impression emerges of six small exhibitions within the whole. It provides an unusual opportunity for works by lesser-known artists to be hung alongside contributions from internationally recognised names. The selectors are solely responsible for their own selection. The only restrictions are limitation of size and to select at least 25% of their section from the open submission. The deadline for entries is in London on 4 and 5 September 2009.

Entry forms and information can be downloaded from [www.parkerharris.co.uk](http://www.parkerharris.co.uk). Alternatively please send an SAE to The ING Discerning Eye Exhibition, c/o Parker Harris, PO Box 279, Esher, Surrey, KT10 8YZ.

For general information:  
t: 01372 462190 or  
e: [de@parkerharris.co.uk](mailto:de@parkerharris.co.uk)  
Competition Administrators

**PARKER HARRIS**

**2009 SELECTORS**

**ARTISTS**

**Gus Cummins RA**  
*Painter*

**Lincoln Seligman**  
*Painter and sculptor*

**COLLECTORS**

**Peter Bowles**  
*Actor*

**Laurence Llewelyn Bowen**  
*Interior Designer and television and radio personality*

**CRITICS**

**Julius Bryant**  
*Keeper of Word & Image Department, V&A Museum*

**Jackie Wullschlager**  
*Writer and Chief Art Critic for the Financial Times*

**PRIZES**

ING Purchase Prize  
**£5000**

Discerning Eye Founder's Purchase Prize  
In honour of Michael Reynolds  
**£2500**

Discerning Eye Chairman's Purchase Prize  
**£1000**

Meynell Fenton Prize  
**£1000**

The Benton Purchase Prize  
**£1000**

Parker Harris Purchase Prize for Print  
To celebrate 20 years of Parker Harris  
**£1000**

The Humphreys Purchase Prize  
**£750**

Regional Entry Prizes  
There will be up to 8 prizes of £250 awarded to an outstanding entry in the national regions. These are: Scotland, the West Country, Wales, Midlands, East Anglia, North of England, London & the South East and Northern Ireland. Please ensure that you have marked your regional area on your Entry Schedule.

## SPONSOR

ING Wholesale Banking in the UK is delighted to sponsor the ING Discerning Eye Exhibition again in 2009. This continues a relationship which goes back to 1999. ING is proud to support one of the most important independent exhibitions in the UK and appreciates The Discerning Eye's commitment to individuality, excellence and increasing opportunities for artists across the UK. ING Wholesale Banking is one of the six businesses of ING Group and is responsible for providing financial products and services to corporate and institutional clients across Europe, the Americas and Asia. Headquartered in Amsterdam, ING Group is one of the world's largest financial institutions, providing a wide range of financial services.

## FRIENDS AND MEMBERS OF THE DISCERNING EYE

The Discerning Eye has a membership system for artists, and a Friends scheme for all other interested parties. Membership costs £40 per year, which includes free submission for up to six works for selection for the main exhibition in November. It does not guarantee that your work will be chosen and hung in the exhibition, but for non-members, the price of submitting six works is currently £54. There are also additional benefits including two newsletters a year and private view tickets.

For further information please check The Discerning Eye website [www.discerningeye.org](http://www.discerningeye.org). Membership application forms are included in all Entry Packs and can also be downloaded from [www.parkerharris.co.uk](http://www.parkerharris.co.uk)

## 2008 EXHIBITION

Of the 572 works on show in the 2008 Discerning Eye Exhibition 279 (49%) were from the open submission artists. A total of 180 works sold, of which 93 (52%) were by open submission artists.

## 2009 EXHIBITION

The Mall Galleries, The Mall, London SW1  
12 November - 22 November 2009  
Admission Free

As many as 600 works may be on show in the exhibition. All selected artists will be invited to a Private View on 12 November 2009.

## HOW TO ENTER

Entry Schedules and labels are only available by either sending an SAE to **The ING Discerning Eye Exhibition, C/o Parker Harris, PO Box 279, Esher, Surrey KT10 8YZ OR** by downloading from the Parker Harris website: [www.parkerharris.co.uk](http://www.parkerharris.co.uk)

## RULES OF THE 2009 EXHIBITION

All works must be for sale. All works must be within the maximum size limit (20 inches). Works must be handmade; photographs are admissible. Each artist may submit up to six works.

### Frames

All works on paper must be securely framed. Frames should be stout enough to accept a small screw or nail in the back for hanging purposes. Fixings are not required, if selected for exhibition mirror plates will be supplied and used by the organisers. There should be no projections of any kind whatsoever from the back of the frames to avoid damage to other works. Metal frames, glazed works with unprotected glass edges and non-reflective glass are all inadmissible. Frames and mounts of unusual colour, size or design may prejudice the Selectors' judgement.

### Maximum Size of Work

2D – 20" x 20" including frame

3D – 20" x 20" x 20" including plinth/stand

**These sizes refer to the exterior frame size or in the case of sculpture the longest lateral or overall vertical measurement. Work exceeding these dimensions will be rejected.**

### Entry Schedule

The Discerning Eye Schedule must accompany all works. It shall not be accepted unless it is signed by the artist or their representative. Please complete the Schedule in block capitals using a ballpoint pen and ensure that the information comes through on all copies.

### Labels

Please complete the gummed labels carefully and attach to the back of the picture or to the base of the sculpture.

### Submission Fees

The submission fee is £9 per work to be paid at the time of delivery. Please make cheques payable to 'The Discerning Eye Ltd'.

### Insurance

The Discerning Eye makes no provision for individual insurance of works and all artists submitting work for exhibition are strongly advised to make their own arrangements in this regard.

## SUBMISSION PROCEDURE

Entry Schedules and labels should be completed and submitted along with entry fees and relevant works of art (unwrapped), to the Mall Galleries or to the regional handing-in centres as detailed below. Works of art can only be accepted on the receiving days stated and should be delivered unwrapped, although corner protection on paintings is permissible. Sculpture, ceramics etc should be sent in sturdy cardboard boxes, packed with lots of packing material. Please do not bind the works with tape or string.

### Collection of Unselected Work

Artists will be notified with Part 2 of the Entry Schedule if their work has not been selected. If you do not receive notification by Thursday 10 September 2009 please contact Parker Harris on 01372 462190. A list of accepted names and registration numbers will be viewable around this time at [www.parkerharris.co.uk](http://www.parkerharris.co.uk).

All unselected works must be collected from the Federation of British Artists, 17 Carlton House Terrace, London, SW1Y 5BD on **Friday 11 and Saturday 12 September 2009, between 10am - 5pm.**

All works not collected on these dates will be removed to storage by the Mall Galleries' designated art carrier, Picture Post, who will levy a charge of £15 (inc. VAT) for this removal and storage. Enquiries should be made to Picture Post directly on 01302 711011 or [picturepost@btinternet.com](mailto:picturepost@btinternet.com). The one off charge from Picture Post is for the removal, storage and return of each work they collect from the Mall Galleries following the official hand out days detailed above. Works removed in this way will be available for collection by appointment from the Picture Post van outside the Mall Galleries when they are next scheduled to be in central London.

### Sale of Works

ALL WORKS MUST BE FOR SALE. A commission of 40% + VAT shall be charged by The Discerning Eye on the price paid for work or copyright or work commissioned at the exhibition or as a result of introductions arranged by The Discerning Eye. The Discerning Eye is a non-profit making organisation and any monies received go towards the next exhibition. Any sales effected by The Discerning Eye will have priority over a sale effected by the artist. Artists should make allowance for this commission of 40% + VAT in the price of the work described in the Entry Schedule. If registered for VAT it is the artist's responsibility to declare and include this sum at the standard rate at the same price. The price entered on the Schedule will be the catalogue selling price so please enter the figures carefully and accurately.

### Online Sales

All works in the ING Discerning Eye Exhibition will be included in The Discerning Eye's online version of the catalogue. Work not sold at the exhibition will remain for sale on the website until 1st January 2010. Artists accepted for exhibition will be asked to provide a digital image of their work and a short biography for inclusion on The Discerning Eye website.

### Collection of Unsold Works

Unsold works will be available for collection from the Federation of British Artists, 17 Carlton House Terrace, London, SW1Y 5BD, on Friday 27 November 2009, 10am - 5pm. The selectors' decisions are final and no correspondence will be entered into. Works not collected on this date will be subject to the same removal and storage charges by the Mall Galleries as the unselected work.

### Photographs

The artist accepts and agrees that all works in the exhibition may be photographed and/or reproduced for: the catalogue, press, publicity, promotion and advertising of The Discerning Eye and/or its activities and/or its exhibitions (including its on-line version of the catalogue) in all territories in perpetuity.

### Copyright

Copyright of all works remains the property of the artist. Any enquiries for copyright will be referred to the artist.

### Care of works

i. The responsibility for loss or damage, however caused, is the responsibility of artists, who are therefore advised to arrange adequate insurance cover against these risks.

ii. In the event of any dispute arising as to any discrepancy whether perceived or real between the sale price specified on the Entry Schedule and any final sale price, The Discerning Eye reserves the right to refer the matter to an independent expert arbitrator whose decision shall be in full and final settlement of any and all claims by either party subject to the limitations as to the liability of The Discerning Eye contained in paragraph i. herein.

## RECEIVING DATES AND PLACES

Delivery of work through a regional collection point will be £8 (inclusive of VAT) per work (excluding Belfast - please contact carrier for charges). **All fees are due at the point of submission.** Cheques should be made payable to 'The Discerning Eye Ltd'. At each regional collection venue, the collecting van will be marked 'The ING Discerning Eye Exhibition'.

London	<b>Friday 4 &amp; Saturday 5 September 2009</b> 10am - 5pm, Federation of British Artists (rear of The Mall Galleries), 17 Carlton House Terrace, London, SW1Y 5BD.
Aberdeen	<b>Saturday 29 August 2009</b> 11am – 12.30pm, Aberdeen University Kings College Campus Car Park, AB24 3FX. Carrier: Picture Post 01302 711011 or <a href="mailto:picturepost@btinternet.com">picturepost@btinternet.com</a> . Return service and collections en route available, please contact carrier for dates and charges.
Belfast	<b>Belfast Wednesday 26 August 2009</b> 10am - 4pm (or by appointment before this date) Delivery Services, 16 Genoa Street, Belfast (corner of Grosvenor Road, West Link.) Carrier: Delivery Services 02890 315080. Please contact carrier direct regarding all transport costs, appoints to hand in and return dates. All transport and entry fees payable on submission.
Birmingham	<b>Thursday 3 September 2009</b> 12pm – 3pm, Barber Institute of Fine Arts car park. Carrier: Art Moves of Chelsea 020 7352 7492. For return service please contact carrier for dates and charges.
Bristol	<b>Tuesday 1 September 2009</b> 11am - 1pm, outside RWA, Queens Road, Clifton, Bristol. Carrier: AJH Van Lines 07774 132662 or <a href="mailto:ajh.vanlines@virgin.net">ajh.vanlines@virgin.net</a> . Return service available please contact carrier for dates and charges.
Cardiff	<b>Tuesday 1 September 2009</b> 3pm – 5pm, outside Llanover Arts Centre, Romily Road, Canton, Cardiff. Carrier: AJH Van Lines, for contact details see Bristol.
Edinburgh	<b>Saturday 29 August 2009</b> 3.45pm – 5.15pm, Edinburgh College of Art, Lady Lawson Street car park, EH3 9DF. Carrier: Picture Post, for contact details see Aberdeen.
Exeter	<b>Wednesday 2 September 2009</b> 10am – 12pm, Motto Motorway Services, Exeter (lorry park). Carrier: AJH Van Lines, for contact details see Bristol.
Glasgow	<b>Sunday 30 August 2009</b> 9.30am – 11am, Glasgow School of Art, junction of Renfrew Street. and Dalhousie Street, G3 6RQ. Carrier: Picture Post, for contact details see Aberdeen.
Kendal	<b>Sunday 30 August 2009</b> 2pm – 3pm, Junction 36 of the M6, van parked in lay-by on A65. For exact details please contact carrier: Picture Post, for contact details see Aberdeen.
Manchester	<b>Saturday 29 August and Tuesday 1 - Friday 4 September 2009</b> 1pm - 4pm. Colin Jelicoe Gallery, 82 Portland Street, M1 4QX. Carrier: Colin Jelicoe, 0161 236 2716. Return services available, please contact carrier directly for dates and charges.
Newcastle	<b>Saturday 29 August 2009</b> 10.30am – 12pm Newcastle College car park, Rye Hill Campus, Scotswood Rd, NE4 5BR. Carrier: Picture Post, for contact details see Aberdeen.
Norwich	<b>Friday 4 September 2009</b> 12pm - 3pm Outside Colman House, University of East Anglia, Earlham Road, NR4 7TJ Carrier: Art Moves of Chelsea, for contact details please see Birmingham.
Penzance	<b>Wednesday 2 September 2009</b> 3pm – 5pm, Penzance Harbour car park (near Bus Station). Carrier: AJH Van Lines, for contact details see Bristol.
Southampton	<b>Thursday 3 September 2009</b> 3pm – 5pm, Millais Gallery car park, Southampton Solent University, East Park Terrace, Southampton. Carrier: AJH Van Lines, for contact details see Bristol.
Yorkshire	<b>Tuesday 25 August 2009</b> 3pm – 7pm, Picture Post, Pengarth, Dame Lane, Misson, Doncaster, DN10 6EB. Carrier: Picture Post, for contact details see Aberdeen.

The ING Discerning Eye Exhibition is organised by

**PARKER HARRIS**

For all enquires PO Box 279, Esher, Surrey KT10 8YZ  
t. 01372 462190 f. 01372460032 or [e.de@parkerharris.co.uk](mailto:e.de@parkerharris.co.uk) [www.parkerharris.co.uk](http://www.parkerharris.co.uk)

The signing of the Entry Schedule shall be taken as the unreserved acceptance of the entire contents of these conditions in the Notice to Artists by signatory.

Registered Charity No 1056091 Company No 03040828 VAT Reg No 657 1501 42  
A company limited by guarantee not having share capital