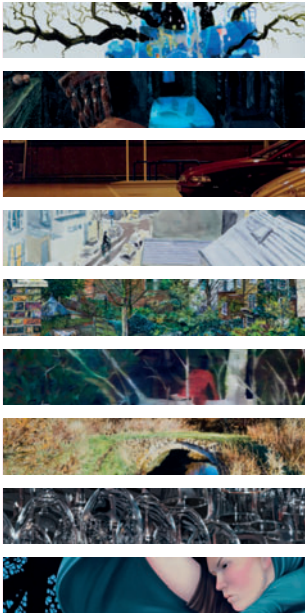


# Lynn Painter-Stainers Prize 2012



A prize for representational painting with awards totalling £25,000

## CALL FOR ENTRIES

### Prizes

First Prize	£15,000
5 Runner-Up Prizes each at	£1,500
Young Artist Award	£2,500

The Young Artist Award is for an artist who is 25 years of age or under on 18 February 2012.

### Judges

The 2012 panel will include the following judges:

- James Hart Dyke, artist
- Ken Howard RA NEAC, artist
- Chris Orr RA, artist
- William Packer, art critic and artist
- Andrew Wilton, Visiting Research Fellow at Tate Britain

This is the 7th year of the Prize. The purpose of the Prize is to encourage the very best creative representational painting and promote the skill of draughtsmanship. We are delighted and excited about the move of the Prize to the Mall Galleries and look forward to an outstanding exhibition in 2012.

The 2010 Lynn Painter-Stainers Prize attracted nearly 800 entries from all over the UK, from which 67 paintings were selected for an exhibition held at Painters' Hall, City of London in November 2010. Rachel Levitas received £15,000 and an engraved gold medal as Winner of the Lynn Painter-Stainers Prize for her painting *Urban fox III*, and Lauren Archer received £2,500 as winner of the Young Artist Award for her work *The chase*.

The runners up, who each received £1,000, were Rebecca Cains, Jeffrey Dennis, Alicia Dubnyckj, Emma Haworth and Peter Wylie. Paintings to the value of over £47,000 were sold during the exhibition.



# Lynn Painter-Stainers Prize 2012

## Deadline for submissions in London 17 & 18 February 2012

Entry forms and labels available to download from [www.parkerharris.co.uk/downloads](http://www.parkerharris.co.uk/downloads) or [www.painter-stainers.org](http://www.painter-stainers.org)

All enquiries to the Prize Organisers:

**PARKER HARRIS**

Tel: 01372 462190 Email: [lhs@parkerharris.co.uk](mailto:lhs@parkerharris.co.uk)

The International Review of Ancient Art & Archaeology  
**MINERVA**  
**Linklaters**



## The Painter-Stainers' Company

Formed in 1502 by the amalgamation of companies in existence before 1283, the Worshipful Company of Painter-Stainers is actively engaged in supporting the art and craft of painting. With a strong commitment to fine art, the Painters' Company is delighted to sponsor this annual prize in conjunction with the Lynn Foundation.

## The Lynn Foundation

The Lynn Foundation is a charity devoted to children, the disabled, music and the arts. Its contribution is the prize money totalling £25,000 and an engraved gold medal for the winner of the First Prize.

## Sponsors

### *Minerva: The International Review of Ancient Art and Archaeology*

With 20 years of extensive, cutting-edge coverage of archaeological excavations and exhibitions from around the world, *Minerva* is the leading international publication focusing on archaeology, the antiquities markets, and museum displays. Enjoyed by academics, specialists and the public, *Minerva* is published six times a year and features a broad range of articles, news, book reviews, and listings of upcoming events.



### Linklaters

Linklaters LLP specialises in advising the world's leading companies, financial institutions and governments on their most important and challenging transactions and assignments. They are generously sponsoring the Lynn Painter-Stainers Prize. [www.linklaters.com](http://www.linklaters.com)

**Linklaters**

### Champagne Bollinger

Champagne Bollinger is an independent family owned house which is proud to be associated with the Lynn Painter-Stainers Prize. We applaud and share its commitment to seeking to attain the finest results in its field via the cultivation of traditional skills whilst remaining open to contemporary innovations and influences. [www.champagne-bollinger.com](http://www.champagne-bollinger.com)



## Rules of the Prize

The Lynn Painter-Stainers Prize is open to living artists over the age of 18 on 18 February 2012, who are resident in the British Isles. Only original, two dimensional works in any painting or drawing media, that have been completed in the last three years, and that have not been previously exhibited, are eligible. All works must be for sale, except commissioned portraits. The judges' decision will be final and binding.

Entries will not be accepted from members of the Charity and Education Committee of the Painter-Stainers' Company.

## Conditions of Entry

Artists may submit up to four works. Works of art submitted must not exceed 72 inches (183 cms) in their largest dimension including frame. Works on paper must be framed. No metal or plastic frames will be accepted for judging. It is suggested that canvases in excess of 36 inches square should have adequate cross-bearers to avoid damage.

There should be no projections from the back of the frames. Please tape down any wires or rings on the back of the frames. All works must be labelled with the artist's name, address, title of work and, if for sale, the price. Works submitted must be available for exhibition until 30 April 2012.

**The risk of damage or loss, however caused, is the responsibility of the artist, who is therefore advised to arrange adequate insurance cover.**

The provisions of this call for entries may be waived or varied by the Prize Organisers in their sole discretion.

## How to Enter

Entry forms and labels available to download from [www.parkerharris.co.uk/downloads](http://www.parkerharris.co.uk/downloads)

## Entry Fee

The entry fee is £15 per work, payable at the time of handing in. Cheques should be made payable to the LPS Prize.

## Handing In

Please label paintings and deliver them unwrapped with a fully completed Entry Form and appropriate entry fees to a collection point opposite.

The notification that will be sent to artists following the judging will be the tear-off section at the bottom of the Entry Form so please ensure that all the sections are clearly completed.

## London

**Federation of British Artists (rear of The Mall Galleries) 17 Carlton House Terrace, London, SW1Y 5BD** on Friday 17 or Saturday 18 February 2012 **between 10am and 5pm.**

## Regional Collection Points

The following collection points have been arranged offering competitive rates for transporting works to the London hand in centre. At each regional collection venue, the collecting van will be marked 'Lynn Painter-Stainers Prize'. Unless otherwise stated, please contact carriers directly regarding transport fees and possible return services. Some of the carriers do also offer individual pick-ups by arrangement.

### **Birmingham – Tuesday 14 February 2012**

2pm – 3pm, The Barber Institute of Fine Arts, Birmingham University, Edgbaston Park Road, B15 2TS.

Carrier: Picture Post  
01302 711 011 / 07833 450 788 or  
[picturepost@btinternet.com](mailto:picturepost@btinternet.com). Please contact carrier for more information and costs.

### **Bristol – RWA, Queens Road, Clifton, Bristol, BS8 1PX.**

Carrier: Art Moves of Chelsea  
0207 352 7492 or  
[artmoveschelsea@aol.com](mailto:artmoveschelsea@aol.com). Please contact carrier for hand in dates and more information and costs.

### **Cardiff – Thursday 16 February 2012**

4pm–6pm, Llanover Arts Centre, Romilly Hall, Canton, Cardiff, CF5 1FH.

Carrier: South Hams Express – 01803 863205 or  
[dave.allen500@btinternet.com](mailto:dave.allen500@btinternet.com). Please contact carrier for more information and costs.

### **Doncaster – Monday 13 February 2012**

3pm–7pm, Pengarth, Dame Lane, Misson, DN10 6EB.

Carrier: see Birmingham

### **Edinburgh – Saturday 11 February 2012**

3.30pm–4.30pm, Edinburgh College of Art, Lady Lawson Street car park, EH3 9DF.

Carrier: see Birmingham.

### **Exeter – Tuesday 14 February 2012**

10am – 12pm, Moto Exeter Motorway Services, top of car park.

Carrier: 3 Lanes, 01736 799298 or  
[info@3lanes.com](mailto:info@3lanes.com). Please contact carrier for local hand in dates and more information and costs.

### **Glasgow – Sunday 12 February 2012**

9.30am–10.30am, adjacent to Glasgow School of Art, junction of Renfrew Street and Dalhousie Street, G3 6RQ.

Carrier: see Birmingham.

### **Kendal – Sunday 12 February 2012**

2.30pm–3.15pm, Please contact carrier for locations.

Carrier: see Birmingham.

### **Kent, Surrey & Sussex**

Individual collections by appointment, please contact carrier for details and prices.

Carrier: see Bristol.

### **Manchester – Sunday 12 February 2012**

Please contact carrier for locations and times for collection en route.

Carrier: see Birmingham.

### **Newcastle – Saturday 11 February 2012**

10.30am–11.30pm, Newcastle on Tyne, Ryehill Campus car park off Scotswood Road, NE4 5BR.

Carrier: see Birmingham.

### **Penzance – Monday 13 February 2012**

10am–12noon, Penzance Harbour Car Park.

Carrier: see Exeter.

### **Southampton – Tuesday 14 February 2012**

3pm – 5pm, Millais Gallery car park, Southampton Institute, East Park Terrace, Southampton, SO14 0YN.

Carrier: see Exeter.

## Acceptance for Exhibition

All artists will be advised whether or not their work has been accepted for exhibition by Thursday 23 February 2012. A list of the accepted artists' names and registration numbers will be viewable at [www.painterstainers.org](http://www.painterstainers.org) or [www.parkerharris.co.uk](http://www.parkerharris.co.uk). If you do not receive notification by **Thursday 23 February 2012** please telephone Parker Harris Partnership on 01372 462190, or refer to the website.

## Considered Work

Works not accepted for exhibition but considered to be worthy of further consideration during the judging will be marked with a 'C' on the tear off section of the Entry Form.

## Collection of Unaccepted Work

All unaccepted paintings must be collected from **Federation of British Artists (rear of The Mall Galleries) 17 Carlton House Terrace, London, SW1Y 5BD** on either Friday 24 (10am to 5pm) or Saturday 25 (10am to 1pm) February 2012, irrespective of where they were handed in. All works not collected on these dates will be removed to storage by Picture Post, who will levy a charge of £24 (inc. VAT) for this removal and storage. Enquiries should be made to Picture Post directly on 01302 711011 or [picturepost@btinternet.com](mailto:picturepost@btinternet.com). The one off charge from Picture Post is for the removal, storage and return of each work they collect from the Lynn Painter-Stainers submission following the official hand out days detailed above. Works removed in this way will be available for collection by appointment only from the Picture Post van outside the Mall Galleries when it is next scheduled to be in central London.

## Sale of Works

All works must be for sale, except for commissioned portraits. Works not for sale must be labelled NFS and marked NFS on the Entry Form. If not, Parker Harris Partnership is authorised to offer them for sale. Commission of 40% + VAT will be levied on works sold during or as a result of the exhibition, or by means of the website, [www.painterstainers.org](http://www.painterstainers.org). Title and risk will pass on payment by and collection by or delivery to the buyer.

## Reproduction of Images

Those artists whose works are selected for exhibition accept and agree that all works in the exhibition may be photographed and/or reproduced for the catalogue, press, publicity, promotion and advertising of the Lynn Painter-Stainers Prize, including on its website.

## 2012 Exhibition

The judges will select approximately 100 works for exhibition.

28 March–5 April 2012

The Mall Galleries, The Mall, London, SW1Y 5BD

Open Monday to Saturday 10am to 5pm Admission free

### Events

During the exhibition at the Mall Galleries a series of FREE exhibition events, demonstrations and workshops will take place. For further details please contact the Prize organisers, Parker Harris, for further details and bookings on 01372 462190 or [lpsh@parkerharris.co.uk](mailto:lpsh@parkerharris.co.uk)

### Tour

A selection of works will tour:

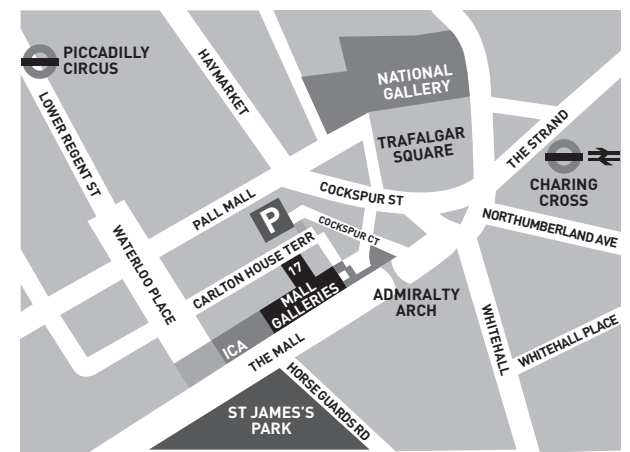
23 April – 27 April 2012

W. H. Patterson Gallery, 19 Albemarle Street, London W1S 4BB

Open Monday to Friday 10am to 6pm Admission free

## Collection of Unsold Works

Artists whose works are unsold at the end of the exhibition and tour will be contacted by Parker Harris, the Prize Organisers, by 27 April 2012 with full details regarding the collection of unsold works.



## Enquiries

All enquires to the Prize Organisers:

### **PARKER HARRIS**

PO Box 279, Esher, Surrey KT10 8YZ

Tel: 01372 462190

Email: [lpsh@parkerharris.co.uk](mailto:lpsh@parkerharris.co.uk)

[www.parkerharris.co.uk](http://www.parkerharris.co.uk)

[www.painter-stainers.org](http://www.painter-stainers.org)