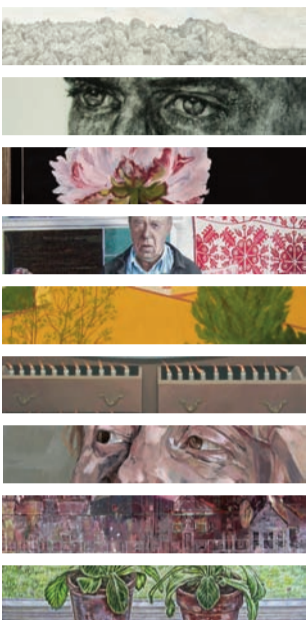


Lynn Painter-Stainers Prize 2010



★ ★ ★

**'Subtle departures
from real life'**

**Michael Glover,
*The Independent***

Now in its 6th year a
prize for representational
painting with awards
totalling £22,500

CALL FOR ENTRIES

Prizes

First Prize	£15,000
5 Runner-Up Prizes each at	£1,000
Young Artist Award	£2,500

The Young Artist Award is for an artist who is 25 years of age or under on 29 September 2010.

Judges

The 2010 panel will include the following judges:

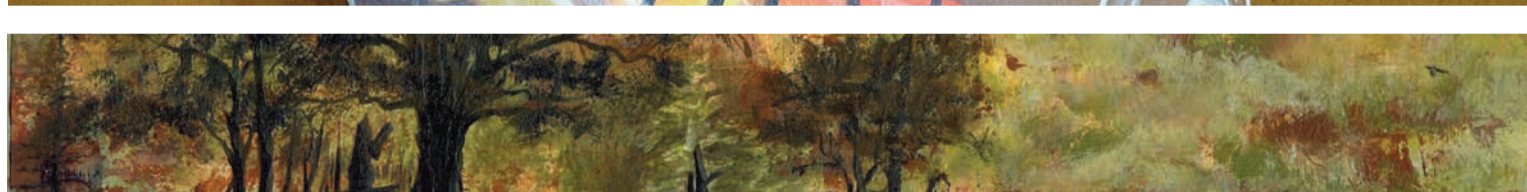
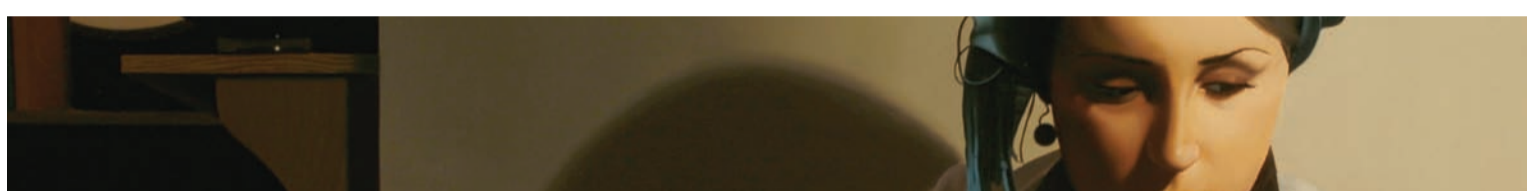
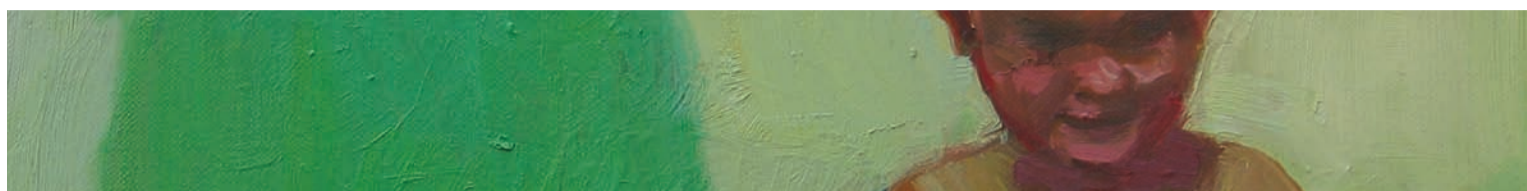
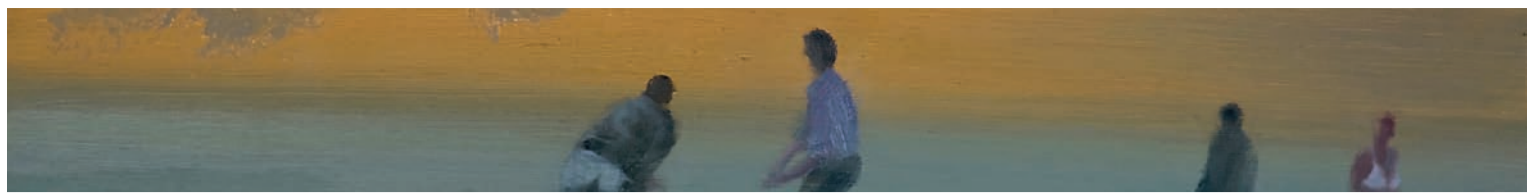
Graham Crowley, artist
Sarah Myerscough, gallery owner
Humphrey Ocean RA, artist
Daphne Todd OBE PPRP NEAC, artist
Andrew Wilton, Visiting Research Fellow at Tate Britain

Ian Fair, a Trustee of the Lynn Foundation, will act as non-voting Chairman of the panel.

This is the 6th year of the Prize. The purpose of the Prize is to encourage creative representational painting and promote the skill of draughtsmanship.

The 2009 Lynn Painter-Stainers Prize attracted nearly 900 entries from all over the UK, from which 82 paintings were selected for an exhibition held at Painters' Hall, City of London in November 2009.

Toby Wiggins received £15,000 and an engraved gold medal as Winner of the Lynn Painter-Stainers Prize for his painting *Suspended animation*, and Michael de Bono, received £2,500 as winner of the Young Artist Award for his work *Natural philosophy*. The runners up, who each received £1,000, were Anna Gariner, Emma Haworth, Lorna Vahey and Lisa Wright. Paintings to the value of over £25,000 were sold during the exhibition.



Lynn Painter-Stainers Prize 2010

**Deadline for
submissions in London
19 & 20 September 2010**

Entry forms and labels available to download
from www.parkerharris.co.uk/downloads
or www.painter-stainers.org

All enquiries to the Prize Organisers:

PARKER HARRIS

Tel: 01372 462190 Email: lps@parkerharris.co.uk

The International Review of Ancient Art & Archaeology
MINERVA
Linklaters



The Painter-Stainers' Company

Formed in 1502 by the amalgamation of companies in existence before 1283, the Worshipful Company of Painter-Stainers is actively engaged in supporting the art and craft of painting. With a strong commitment to fine art, the Painters' Company Charity is delighted to sponsor this annual prize in conjunction with the Lynn Foundation.

The Lynn Foundation

The Lynn Foundation is a charity devoted to children, the disabled, music and the arts. Its contribution as co-sponsor is the prize money totalling £22,500 and an engraved gold medal for the winner of the First Prize.

Sponsors

Minerva: The International Review of Ancient Art and Archaeology

With 20 years of extensive, cutting-edge coverage of archaeological excavations and exhibitions from around the world, *Minerva* is the leading international publication focusing on archaeology, the antiquities markets, and museum displays. Enjoyed by academics, specialists and the public, *Minerva* is published six times a year and features a broad range of articles, news, book reviews, and listings of upcoming events.

The International Review of Ancient Art & Archaeology
MINERVA

Linklaters LLP

The Lynn Painter-Stainers Prize is generously sponsored by Linklaters LLP, a law firm which specialises in advising the world's leading companies, financial institutions and governments on their most important and challenging transactions and assignments. (www.linklaters.com)

Linklaters

Champagne Bollinger

Champagne Bollinger is an independent family owned house which is proud to be associated with the Lynn Painter-Stainers Prize. We applaud and share its commitment to seeking to attain the finest results in its field via the cultivation of traditional skills whilst remaining open to contemporary innovations and influences. www.champagne-bollinger.com



Rules of the Prize

The Lynn Painter-Stainers Prize is open to living artists over the age of 18 on 19 September 2010, who are resident in the United Kingdom, Channel Islands or Isle of Man. Only original, two-dimensional works in any painting media, that have been completed in the last three years, and that have not been previously exhibited, are eligible. All works must be for sale, except commissioned portraits. The judges' decision will be final and binding.

Entries will not be accepted from members of the Charity and Education Committee of the Painter-Stainers' Company.

Conditions of Entry

Artists may submit up to four works. Works of art submitted must not exceed 72 inches (183 cms) in their largest dimension including frame. Works on paper must be framed. No metal or plastic frames will be accepted for judging. It is suggested that canvases in excess of 36 inches square should have adequate cross-bearers to avoid damage.

There should be no projections from the back of the frames. Please tape down any wires or rings on the back of the frames. All works must be labelled with the artist's name, address, title of work and, if for sale, the price. Works submitted must be available for exhibition until 31 December 2010.

The risk of damage or loss, however caused, is the responsibility of the artist, who is therefore advised to arrange adequate insurance cover.

How to Enter

Entry forms and labels available to download from www.parkerharris.co.uk/downloads

Entry Fee

The entry fee is £15 per work, payable at the time of handing in. Cheques should be made payable to the LPS Prize.

Handing In

Please label paintings and deliver them unwrapped with a fully completed Entry Form and appropriate entry fees to a collection point opposite.

The notification that will be sent to artists following the judging will be the tear-off section at the bottom of the Entry Form so please ensure that all the sections are clearly completed.



London

St Mary Abbots Centre, Vicarage Gate, London W8 4HN on Sunday 19 or Monday 20 September 2010 **between 10am and 5pm**, or to the **regional collection points listed opposite**. Please note that there is **NO PARKING** on the forecourt on Monday 20 September 2010.

Regional Collection Points

The following collection points have been arranged offering competitive rates for transporting works to the London hand in centre. At each regional collection venue, the collecting van will be marked 'Lynn Painter-Stainers Prize'. Unless otherwise stated, please contact carriers directly regarding transport fees and possible return services. Some of the carriers do also offer individual pick-ups by arrangement.

Birmingham – Thursday 2 September 2010

12noon–3pm, The Barber Institute of Fine Arts, Birmingham University, Edgbaston Park Road, B15 2TS.

Carrier: Art Moves of Chelsea, 0207 352 7492 or artmoveschelsea@aol.com. Please contact carrier for information.

Bristol – Friday 10 September 2010

12noon–3pm, RWA, Queens Road, Clifton, Bristol, BS8 1PX.

Carrier: see Birmingham.

Cardiff – Thursday 9 September 2010

4pm–6pm, Llanover Arts Centre, Romilly Hall, Canton, Cardiff, CF5 1FH.

Carrier: see Birmingham.

Doncaster – Monday 6 September 2010

3pm–7pm, Pengarth, Dame Lane, Misson, DN10 6EB.

Carrier: Picture Post – 01302 711 011/ 07769 973 900 or picturepost@btinternet.com. Please contact carrier for more information and costs.

Edinburgh – Saturday 4 September 2010

3pm–4.30pm, Edinburgh College of Art, Lady Lawson Street car park, EH3 9DF.

Carrier: see Doncaster.

Exeter – Saturday 11 September 2010

2pm–3.30pm, Moto Exeter Motorway Services, top of car park.

Carrier: AJH Van Lines – 07774 132 662 or ajh.vanlines@virgin.net. Please contact carrier with dimensions and number of works, also for information regarding carriage costs. Returns service is available, details upon hand-in.

Glasgow – Sunday 5 September 2010

9.30am–11am, adjacent to Glasgow School of Art, junction of Renfrew Street and Dalhousie Street, G3 6RQ.

Carrier: see Doncaster.

Kendal – Sunday 5 September 2010

2.45pm–3.45pm, Please contact carrier for locations.

Carrier: see Doncaster.

Kent, Surrey & Sussex

Individual collections by appointment, please contact carrier for details and prices.

Carrier: see Birmingham.

Manchester – Sunday 5 September 2010

Please contact carrier for locations and times for collection en route.

Carrier: see Doncaster.

Newcastle – Saturday 4 September 2010

10am–11.30pm, Newcastle on Tyne, Ryehill Campus car park off Scotswood Road, NE4 5BR.

Carrier: see Doncaster.

Norwich – Friday 3 September 2010

12pm–3pm, outside Colman House, University of East Anglia, Earlham Road, NR4 7TJ.

Carrier: see Birmingham.

Penzance – Tuesday 14 September 2010

10am–12noon, Penzance Harbour Car Park, near bus stop.

Carrier: see Exeter.

Southampton – Saturday 11 September 2010

9am–10am, Millais Gallery car park, Southampton Institute, East Park Terrace, Southampton, SO14 0YN.

Carrier: see Exeter.

Acceptance for Exhibition

All artists will be advised whether or not their work has been accepted for exhibition by Thursday 23 September 2010. A list of the accepted artists' names and registration numbers will be viewable at www.painterstainers.org or www.parkerharris.co.uk. If you do not receive notification by **Thursday 23 September 2010** please telephone Parker Harris Partnership on 01372 462190, or refer to the website.

Considered Work

Works not accepted for exhibition but considered to be worthy of further consideration during the judging will be marked with a 'C' on the Entry Form.

Collection of Unaccepted Work

All unaccepted paintings must be collected from **St Mary Abbots Centre, Vicarage Gate, London W8 4HN** on either Friday 24 (10am to 5pm) or Saturday 25 (10am to 4pm) September 2010, irrespective of where they were handed in. Please note that there is **NO PARKING** on the forecourt on Friday 24 September 2010. All works not collected on these dates will be removed to storage by Picture Post, who will levy a charge of £23 (inc. VAT) for this removal and storage. Enquiries should be made to Picture Post directly on 01302 711011 or picturepost@btinternet.com. The one off charge from Picture Post is for the removal, storage and return of each work they collect from the Lynn Painter-Stainers submission following the official hand out days detailed above. Works removed in this way will be available for collection by appointment only from the Picture Post van outside the Mall Galleries when they are next scheduled to be in central London.

Sale of Works

All works must be for sale, except for commissioned portraits. Works not for sale must be labelled NFS and marked NFS on the entry form. If not, Parker Harris Partnership is authorised to offer them for sale. Commission of 40% + VAT will be levied on works sold during or as a result of the exhibition, or by means of the website, www.painterstainers.org. Title and risk will pass on payment by and collection by or delivery to the buyer.

Reproduction of Images

Those artists whose works are selected for exhibition accept and agree that all works in the exhibition may be photographed and/or reproduced for the catalogue, press, publicity, promotion and advertising of the Lynn Painter-Stainers Prize, including its website.

2010 Exhibition

The judges will select approximately 70 works for exhibition.

15 November–26 November 2010

Painters' Hall, 9 Little Trinity Lane, London EC4V 2AD

Open Monday to Saturday 10am to 4pm Admission free



The exhibition will then tour.

29 November–3 December 2010

W. H. Patterson Gallery, 19 Albemarle Street, London W1S 4BB

Open Monday to Friday 10am to 6pm Admission free

A series of events will be organised during the exhibition, full details of which are to be confirmed. For all enquiries, please contact Parker Harris on 01372 462190 or lps@parkerharris.co.uk.

Collection of Unsold Works

Artists whose works are unsold at the end of the exhibition will be contacted by Parker Harris, the Prize Organisers, by 30 November 2010 with full details regarding the collection of unsold works.

Enquiries

All enquires to the Prize Organisers:

PARKER HARRIS

PO Box 279, Esher, Surrey KT10 8YZ

Tel: 01372 462190

Email: lps@parkerharris.co.uk

www.parkerharris.co.uk

www.painter-stainers.org